











5.50 x 0.50 u



5.50 x 8.50 in





5.50 x 8.50 in

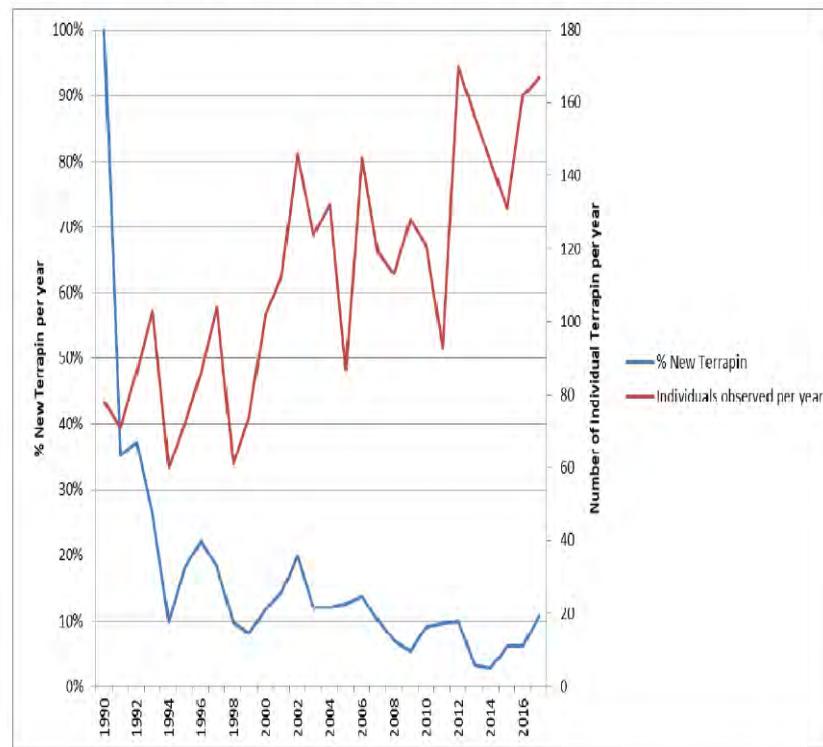






Annual Background Information on the BLCT Terrapin Project										
YEAR	Individual Excluder IE's	Common Excluder CE nests	#volunteers	Total # Nests observed	# Individual Terrapin	# Hatchlings	# multi nestings	Scavenged Nests	Total Nests including Scavenged	% scavenged Nests
1990	0	0	3	106	78		28			
1991	0	0	3	100	71		29			
1992	4	0	3	104	80		24			
1993	0	0	3	155	106		49			
1994	6	0	3	64	64	44	0			
1995	8	0	3	77	62	60	15	198	275	72%
1996	0	0	4	107	83		24	234	341	69%
1997	10	0	4	131	104		27	139	270	51%
1998	7	12	4	70	61	136	9	200	270	74%
1999	0	20	4	95	81	200	20	208	303	69%
2000	0	20	4	130	101	170	29	not counted	#VALUE!	#VALUE!
2001	0	20	6	141	117	199	24	198	339	58%
2002	0	23	5	192	147	79	45	239	431	55%
2003	0	23	6	160	125	143	35	334	494	68%
2004	0	20	8	174	133	225	41	244	418	58%
2005	0	21	4	95	88	119	7	249	344	72%
2006	0	25	7	207	147	296	60	137	344	40%
2007	0	23	8	148	124	231	24	192	340	56%
2008	0	21	7	137	114	279	23	203	340	60%
2009	17	21	9	153	122	298	31	75	228	33%
2010	17	20	8	151	121	260	30	75	226	33%
2011	20	20	8	113	93	289	20	75	188	40%
2012	22	24	11	223	179	390	44	not counted	#VALUE!	#VALUE!
2013	23	20	12	230	169	384	61	100	330	30%
2014	24	23	12	194	144	535	50	129	323	40%
2015	23	22	13	153	122	458	31	not counted	#VALUE!	#VALUE!
2016	50	27	16	228	167	714	61	35	263	13%
2017	50	25	25	234	167	727	67	not counted	#VALUE!	#VALUE!

Number of Individuals Observed/year and % New Terrapin



**I'm Cautiously Optimistic about Our Diamondback
Terrapin Population**



