



**Lessons Learned at Kettle Pond Native
Plant Garden and
ReSeeding RI its Importance**

**Land and Water Mini-Summit
April 8th 2023**

**But First -
Something about Kettle Pond Native Plant Garden**



The focus of the Kettle Pond RI Native Plant Garden is on preserving the biodiversity of Rhode Island's native plant communities, wildlife, and pollinators.



Biodiversity

“We are all connected” all interconnected - species and communities and all have the same value - It's life and how we think about it.

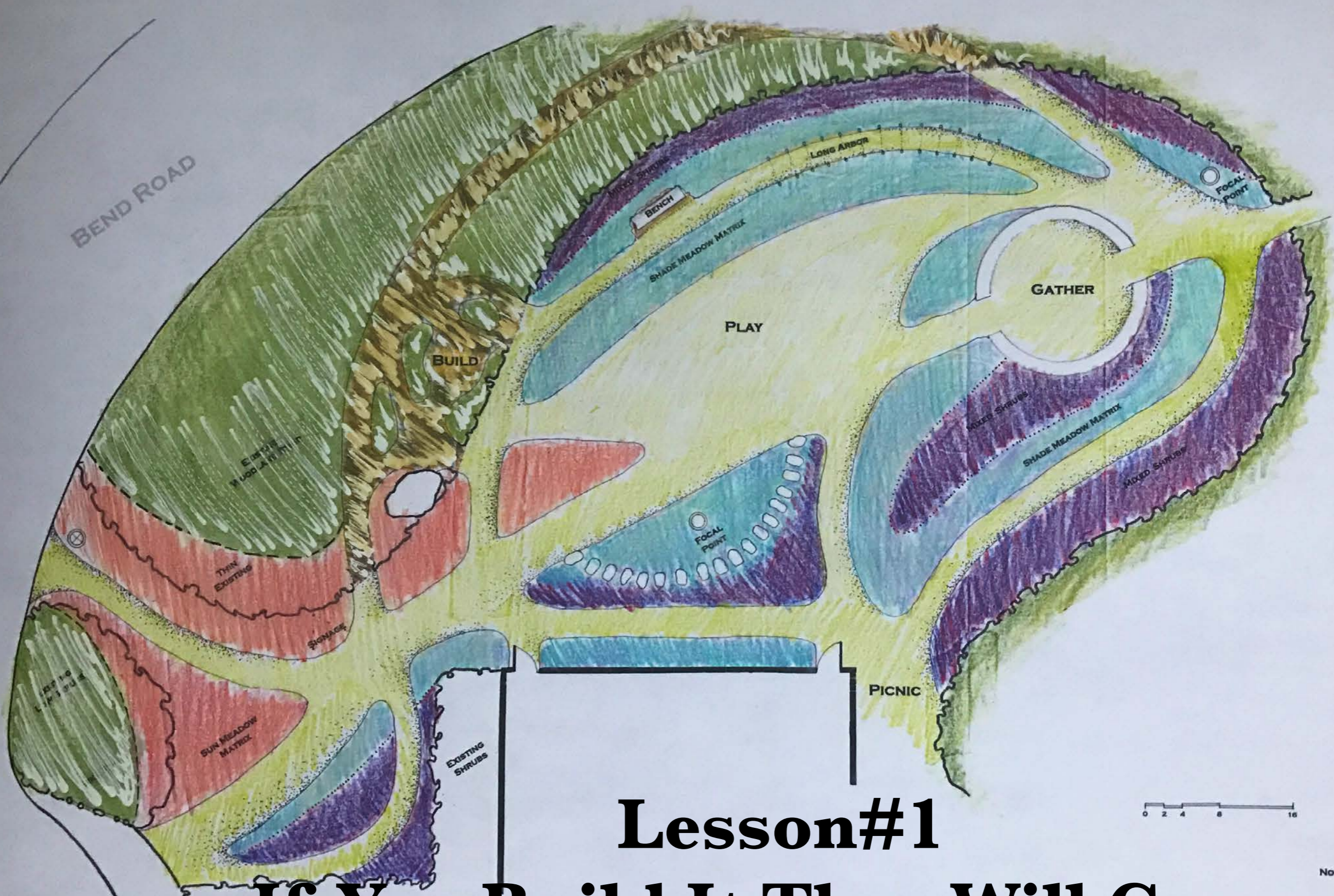
Rick Enser - Biodiversity Expert



Narragansett Tribe

MOSOQUOTAASH

“It’s all connected”

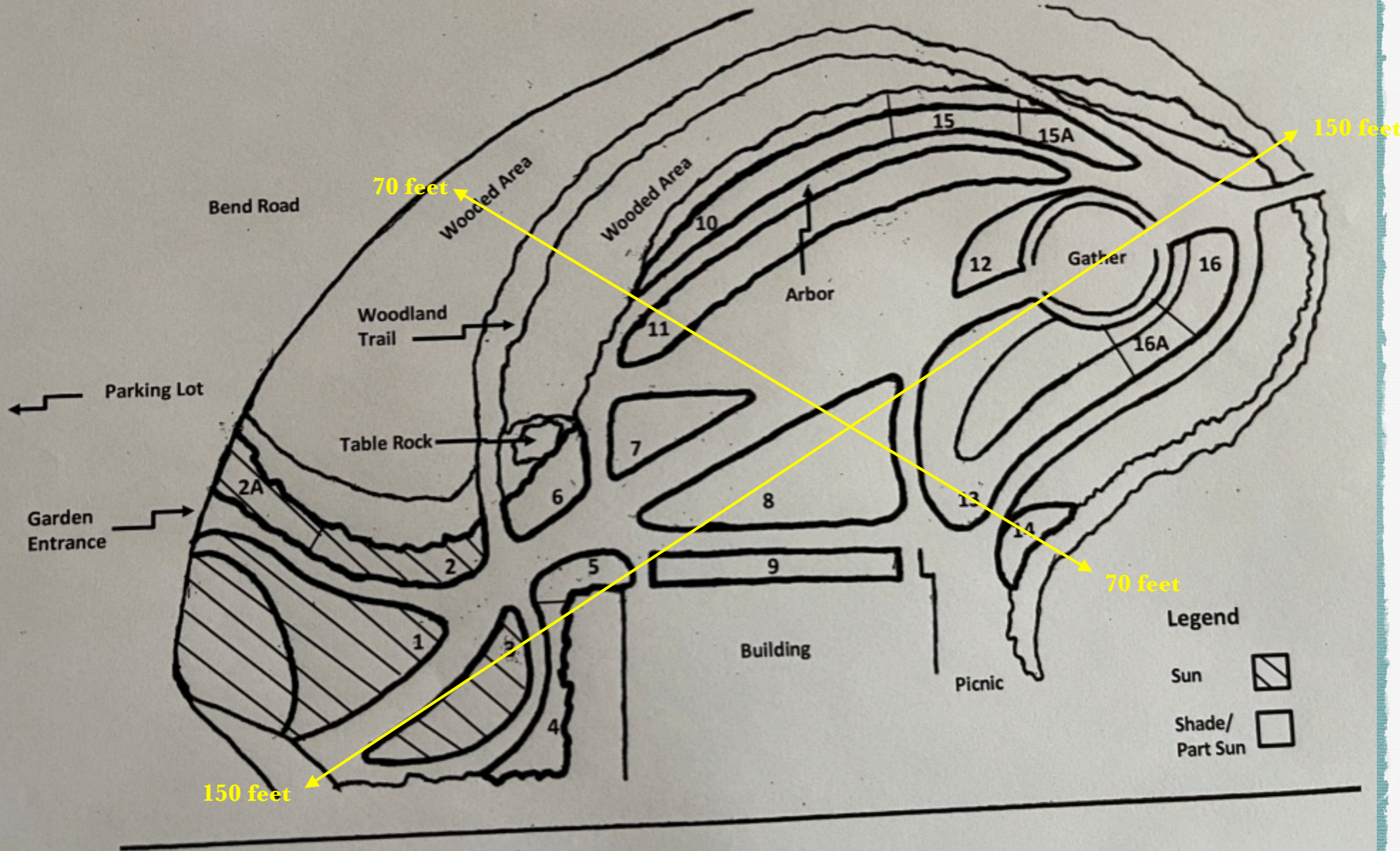


Lesson#1

If You Build It They Will Come

NOT FOR CONSTRUCTION

RI Native Plant Garden Kettle Pond Visitor's Center US Fish and Wildlife Service



Late May 2017



Five years later
2022



Late June 2022

**(URI Garden Tour
June 24/25 2023
Come Visit Us)**



Pollinators Found
at Kettle Pond RI
Native Plant
Garden in 2017-22



Clear Winged Hummingbird Moth

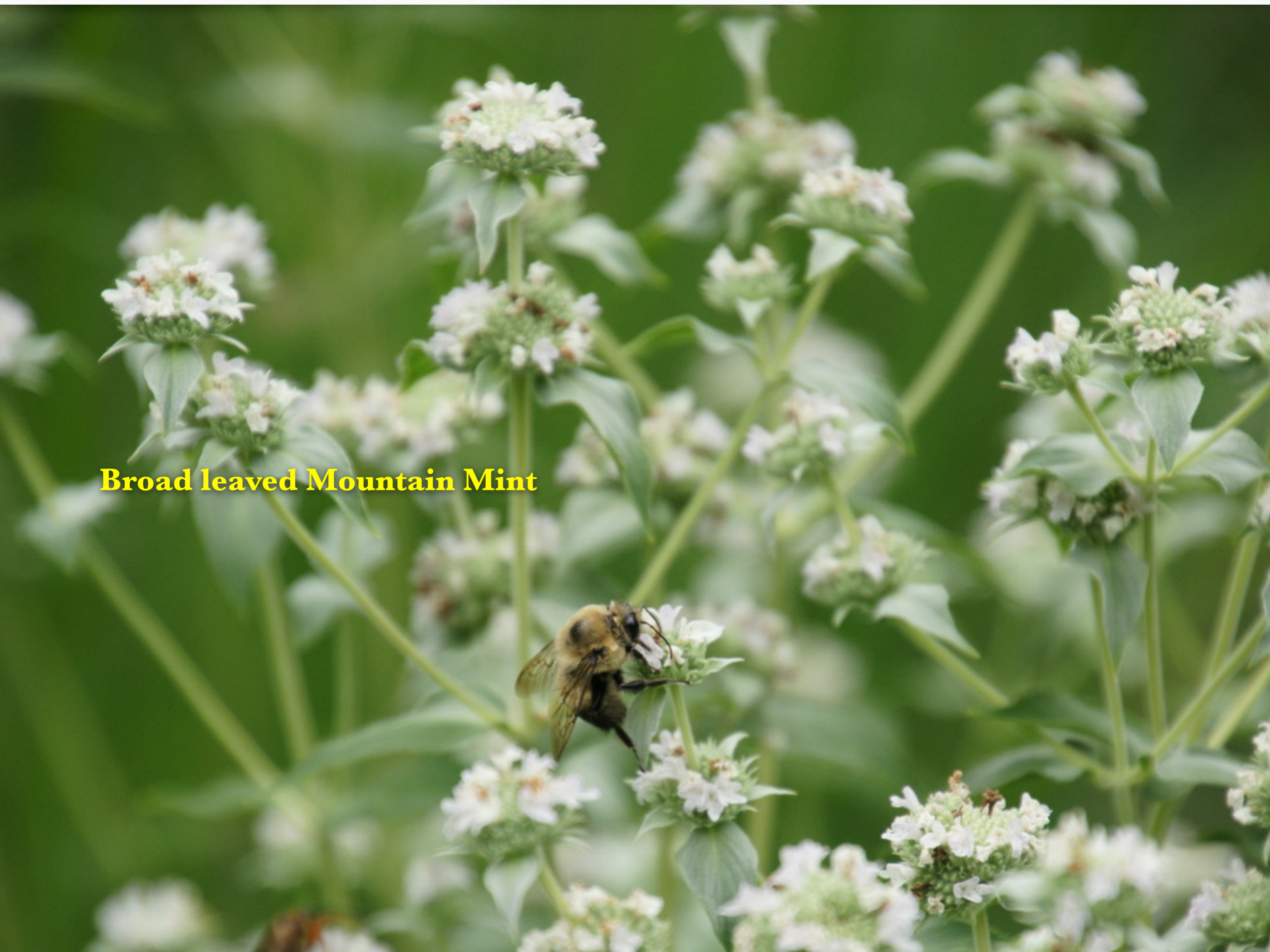


Sachem Skipper

Butterfly Milkweed



Broad leaved Mountain Mint





Sweat Bee

Purple headed Sneezeweed

Blue Vervain

Bumble Bee











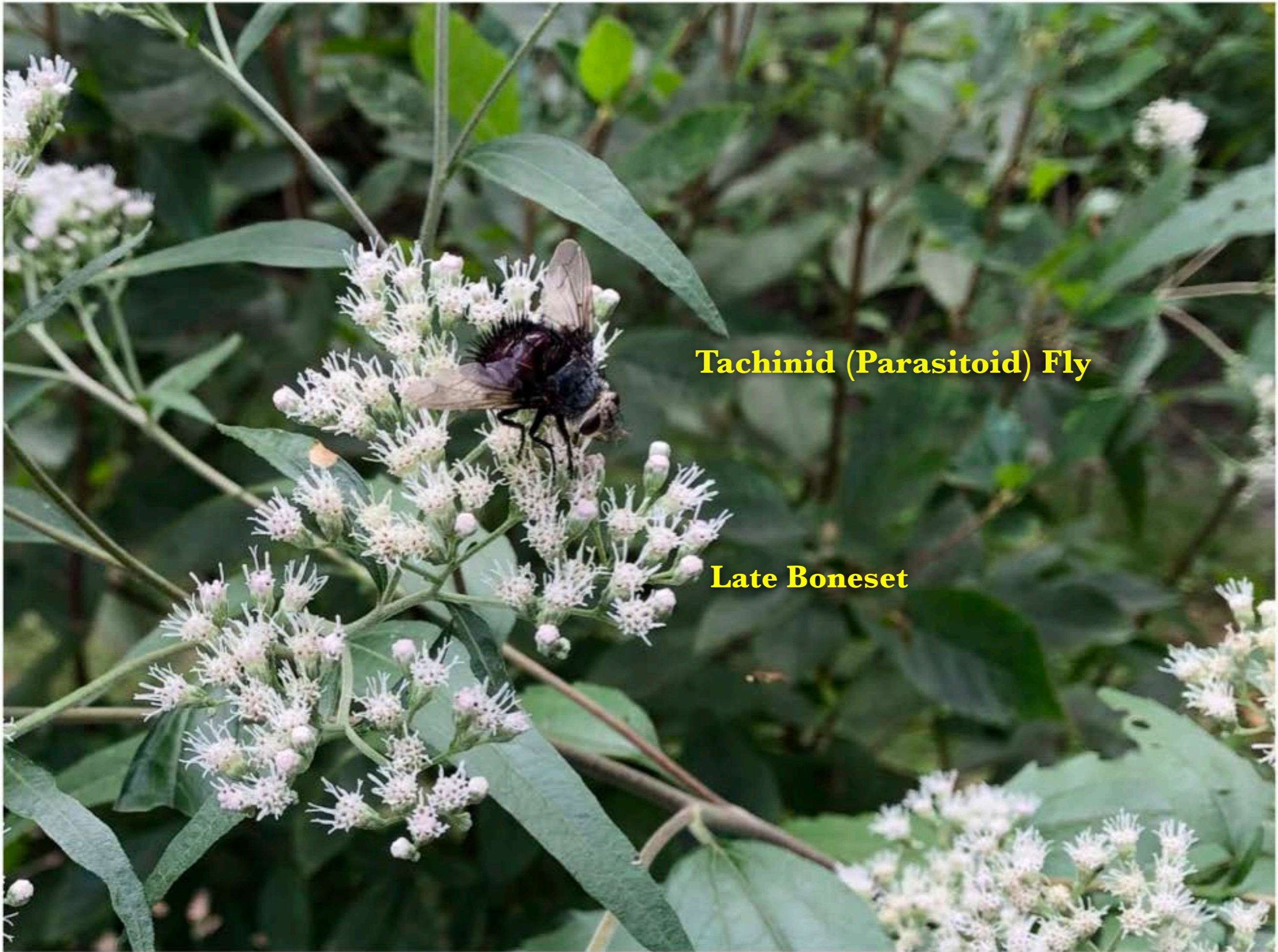
Northern Blazing Star



Staghorn Sumac

Formica Ants





Tachinid (Parasitoid) Fly

Late Boneset



Caterpillar

Digger Wasp



Splish Splash -



Eastern-eyed Click Beetle

Deer



Chipmunks



DEER & RABBIT

REPELLENT

CONCENTRATE₂

Repelente concentrado para venados y conejos,

HARMLESS TO PLANTS & ANIMALS

Lesson# 2
Spraying is Critical for Repelling Deer, Rabbits & Chipmunks



RAIN RESISTANT



APPLY YEAR-ROUND



REPELS DEER & RABBITS
From Landscaped Ornamental Gardens, Flowers, Shrubs, Trees & Vines

COVERS UP TO 20,000 SQ FT

Active Ingredients:

Putrescent Whole Egg Solids	10.405%
Garlic	3.746%
Sodium Lauryl Sulfate	0.402%
Potassium Sorbate	0.486%
Thyme Oil	0.010%
Other Ingredients**	84.951%

**Water, Sodium Citrate, Sodium Benzoate, Citric Acid, Xanthan Gum

KEEP OUT OF REACH OF CHILDREN

CAUTION See back for additional precautionary statements.

Net 1 gal (128 fl oz / 3.7 L)

MANTÉNGASE FUERA DEL ALCANCE DE LOS NIÑOS
PRECAUCIÓN Consulte la parte posterior para conocer las declaraciones preventivas adicionales.

*For terms of guarantee, see back.

17-15933

Lesson # 3

Choose Reliable Native Plant Sources For Success

Plant Sources:

**RI Natural History Survey
Rhode Natives**

**Greenbelt Native Plant Center
Staten Island, NY
EcoRegion 59**



The Source for Kettle Pond Native Plants:

Original Planting in 2017:

RI Natural History Survey

Rhode Natives

Greenbelt Native Plant Center

Plantings from 2018-2022- KettlePond

**RI Native Plants from Seed
Plants & Shrubs Also from**

RI Wild Plant Society

Blue Moon Nursey

Russ Cohen -Edible Natives

Tysh McGrail (Woodscapes)

Planters Choice in CT/Eco 59 Plants

USFWS RI

Lesson # 4

Native Plant Gardens Are Beautiful Through the Seasons















Lesson # 5
Gardens for Special Situations
Full Sun











Lesson # 6
Gardens for Special Situations
Morning Sun / Rain Garden



2020 - Plan for New Entrance Garden - KP Visitor Center

Tysh McGrail (Woodscapes)



Property Notes:

- Mix. RI Natives to Add:
- Hamamelis (Tysh Gift) virginiana 1/20
 - WITCH HAZEL (shade @ 3' x 4' foot frog pool)
 - Clematis virginiana VIRGINIA BOWER

Client: KETTLE POND FRONT ENTRANCE

Contact #: David & Janis

PLANTING SKETCH

Tysh Tilt McGrail
 Certified Landscape Designer
 Woodscapes, inc.
 106 Huntinghouse Rd.
 No. Scituate, RI 02857
 401-568-0673

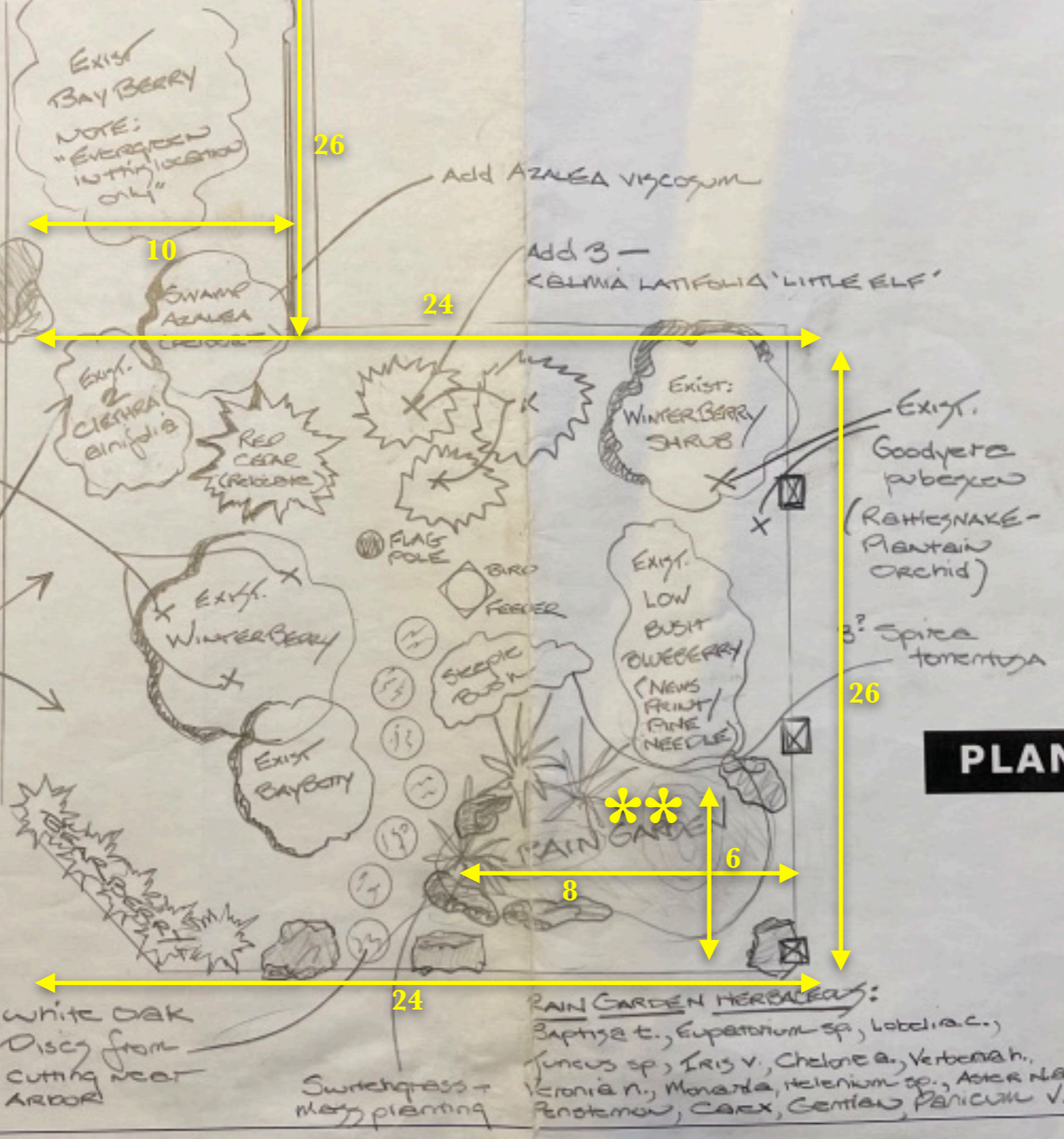
Date: 2.9.2020

North Arrow & Scale

Mix. Notes -
 • LIFT & RELOCATE -
 10' x 15' blue & bayberry
 • Add & relocate some
 stuff ****NEW RAIN GARDEN****
 garden 1'-1.5' depression

Add
 Gaultheria
 procumbens
 'Wintergreen'

populate
 by volunteers
 from Native
 Plant Demonstration
 Garden
 Move plants that
 prefer hot/dry
 sidewalk edge -
 SW → part SW



White oak
 Discs from
 cutting near
 ARBOR
 Switchgrass -
 moss planting

RAIN GARDEN HERBALS:
 Baptisia t., Eupatorium sp., Lobelia c.,
 Juncus sp., Iris v., Chelone a., Verbena h.,
 Veronica n., Monarda, Helenium sp., Aster n.,
 Penstemon, Carex, Gentian, Panicum v.

****Note New Rain Garden**



**Deepened the Rain
Garden and added an
Overflow area**

Eastern Red Cedar to be moved

Deepen

Overflow area

August 20, 2020



Elf Mountain Laurel

Bayberry

Low Bush Blueberry

Switch Grass

Big Blue Lobelia

Cardinal Flower

Pale Spiked Lobelia

Butterfly Milkweed

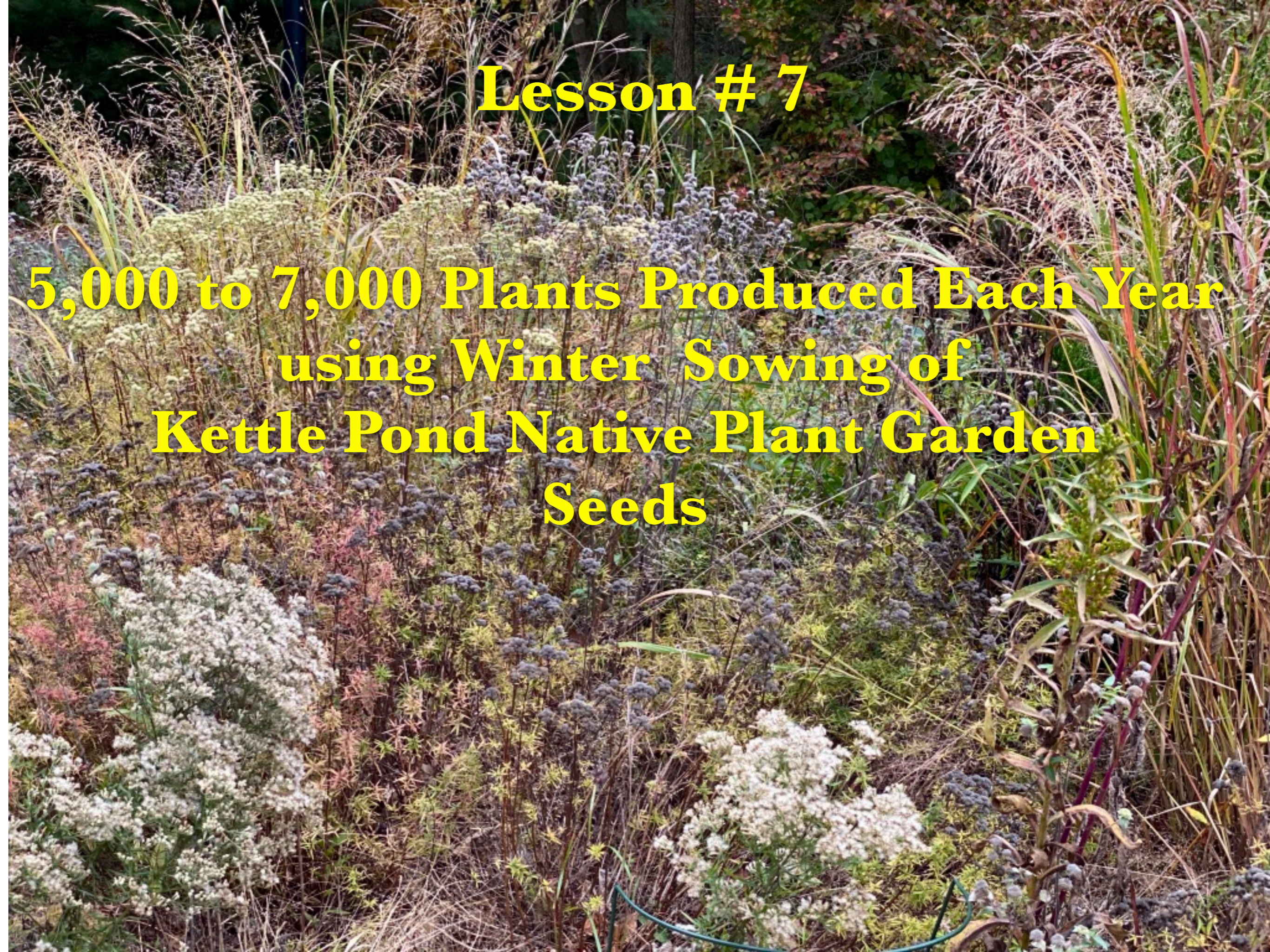
Purple Love Gras

Eastern Blue Eyed Grass



Lesson # 7

**5,000 to 7,000 Plants Produced Each Year
using Winter Sowing of
Kettle Pond Native Plant Garden
Seeds**



**Cleaning seeds for planting
Removing chaff to release seeds
Using different grades of screens**

**Lobelia Cardinalis
Cardinal Flower**

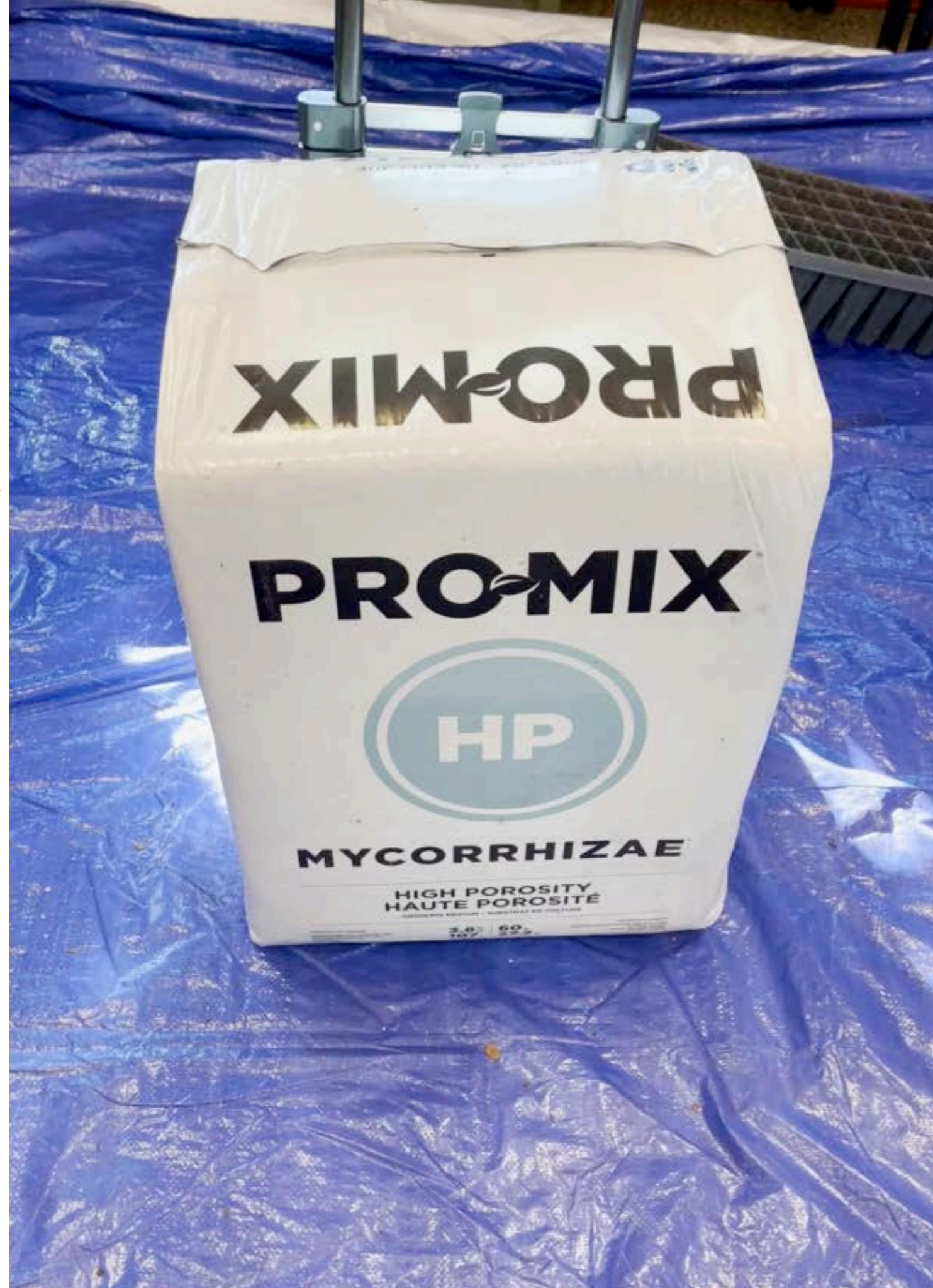


Getting Ready for Planting

**Why HP - High Porosity
Potting Soil?**

**Peat Moss, Perlite, & Mycorrhizae
Also some lime**

**Importance of
Mycorrhizae fungus
Symbiotic Relationship
Mutually Beneficial to both
Mycorrhizae fungus
And the host Plant**



Ready for the Outside Back Deck

Hardware screen





Bullseye Power Blue light

11-19-21

09-21-21

Japanese Prunella

Nutrition Facts
Amount per serving
Calories 110
Total Fat 25g
Total Carb 15g
Net Carb 15g
Sodium 10g
Fiber 1g
Protein 1g
Total Fat 25g
Total Carb 15g
Net Carb 15g
Sodium 10g
Fiber 1g
Protein 1g







Spring Repotting for Summer Plant Growth

- *Coast of Maine-Potting Soil
- *Coast of Maine - Lobster Compost
- *ProMix HP Mycorrhizae
- *Fertilizer

Labels for Each Pot



Erin - Filling Up the Dog Pen





**Note long thin roots
Need to be handled carefully**



Repotting of Initial Potting in Late July



Summer Growing Area
Protected from “Critters of All Kinds”



**That is How We Produced 5,000 Plus
Plants in My Backyard
2022**



Plants for Kettle Pond RI Native Plant Garden

Plants going Into the Ground



Sharing Plants with US Fish Wildlife Service for RI Refuges





A Project of the RI Wild Plant Society
Amplifying RI & Ecoregion 59 Native
Seeds and Plants

“An important part of the Eco59 mission is to heal a broken landscape. The systematic displacement of people, the destruction of the environment, and the consequent loss of abundance is a direct result of not honoring our relationship with the land around us. I view our work, growing ecotypic seed to restore native plants in the northeast, as a reminder of all that has been lost and all that we must work to restore.”

MOSOQUOTAASH

“It’s all connected”

Dina Brewster, eco59 farmer and CTNOFA

ReSeeding
RHODE ISLAND





The Ecotype Project
Dina Brewster at CTNofa



WWW.CTNOFA.ORG/ECOTYPEPROJECT/
PLANT THE POLLINATOR PATHWAY + GREEN CORRIDOR!
THE RIGHT PLANTS IN THE RIGHT PLACE.

Steps

1. Gather — Botanist

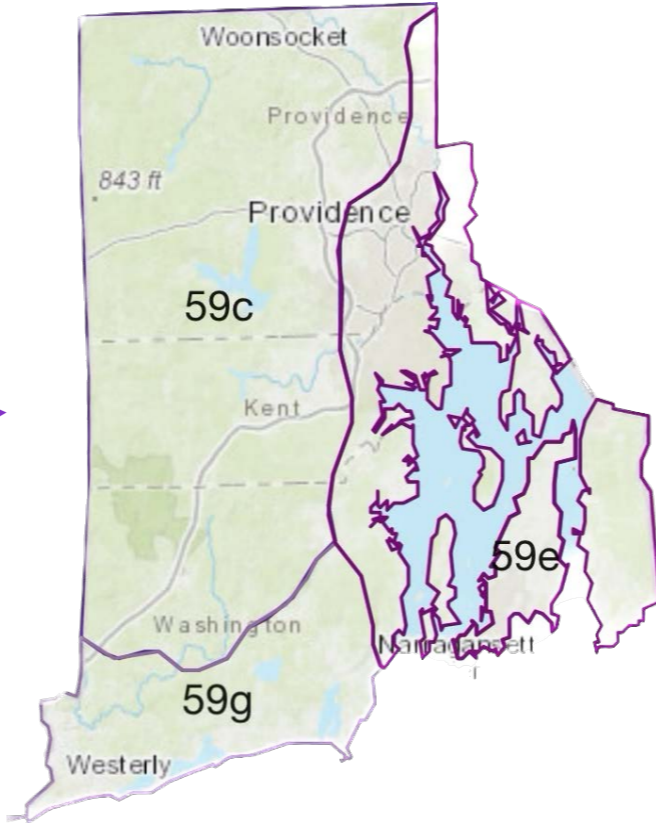
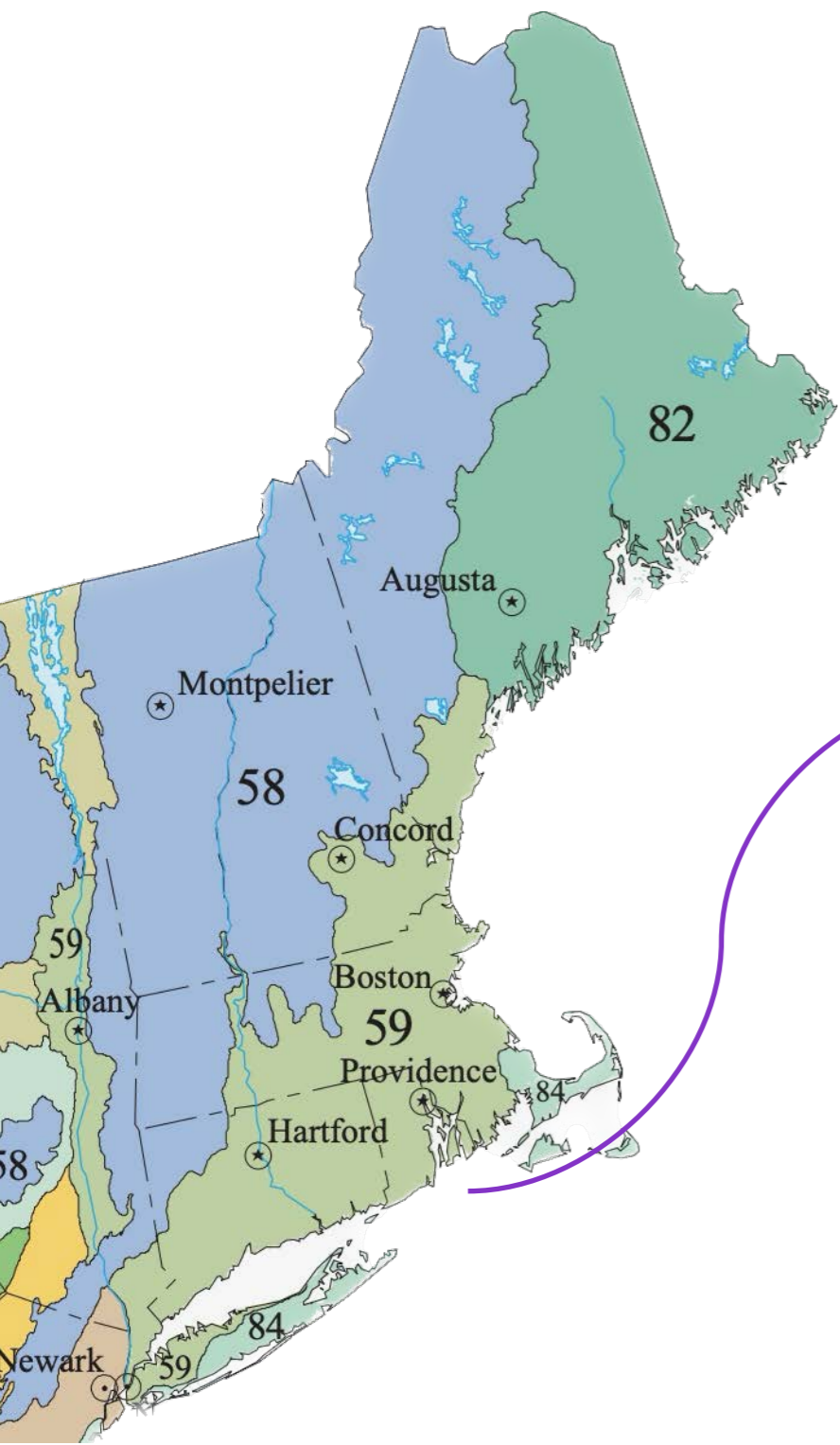
2. Farm — Founder Plots

3. Harvest — F1 Generation Seeds

4. Growers — RIWPS+

5. Plant — General Public+





Ecotype: a population of a species that is adapted to a local environment



- better adapted to local habitats
- better adapted to local environmental stressors

• better adapted to native pollinators

First Steps

Develop a
species list

Gain written
permission from
land stewards

Find
populations

Document
findings

Seeds of Success (SOS) Protocols

- Population contains > 50 individuals
- Assess population throughout the growing season
- Collect voucher specimens
- Collect 5,000 - 10,000 seeds 2-3 times per season





Cooperating Organizations

- Audubon Society of Rhode Island
- Cumberland Land Trust
- Town of Cumberland
- The Nature Conservancy
- Norman Bird Sanctuary
- RI Department of Environmental Management (RI DEM)
- Warren Land Conservation Trust
- Westerly Land Trust

Collected Species

Achillea millefolium (common yarrow)

Andropogon glomeratus (bushy bluestem)

Asclepias incarnata (swamp milkweed)

Deschampsia flexuosa (wavy hair grass)

Eupatorium hyssopifolium (hyssop-leaved thoroughwort)

Eupatorium perfoliatum (boneset thoroughwort)

Eupatorium pilosum (ragged thoroughwort)

Eutrochium dubium (coastal Joe-Pye weed)

Geranium maculatum (wild geranium)

Ionactis linariifolia (flax-leaved aster)

Lespedeza capitata (round-headed bush clover)

Lespedeza hirta (hairy bush clover)

Lobelia cardinalis (cardinal flower)

Lobelia inflata (bladder-pod lobelia)

Lobelia spicata var. *spicata* (pale-spiked lobelia)

Mimulus ringens (Allegheny monkeyflower)

Panicum virgatum (panic switchgrass)

Prunella vulgaris ssp. *lanceolata* (common selfheal)

Pycnanthemum muticum (broad-leaved mountain mint)

Pycnanthemum tenuifolium (narrow-leaved mountain mint)

Schizachyrium scoparium var. *scoparium* (little bluestem)

Solidago caesia (blue-stemmed goldenrod)

Solidago nemoralis (gray goldenrod)

Solidago odora (licorice-scented goldenrod)

Solidago puberula (downy goldenrod)

Sorghastrum nutans (grass)

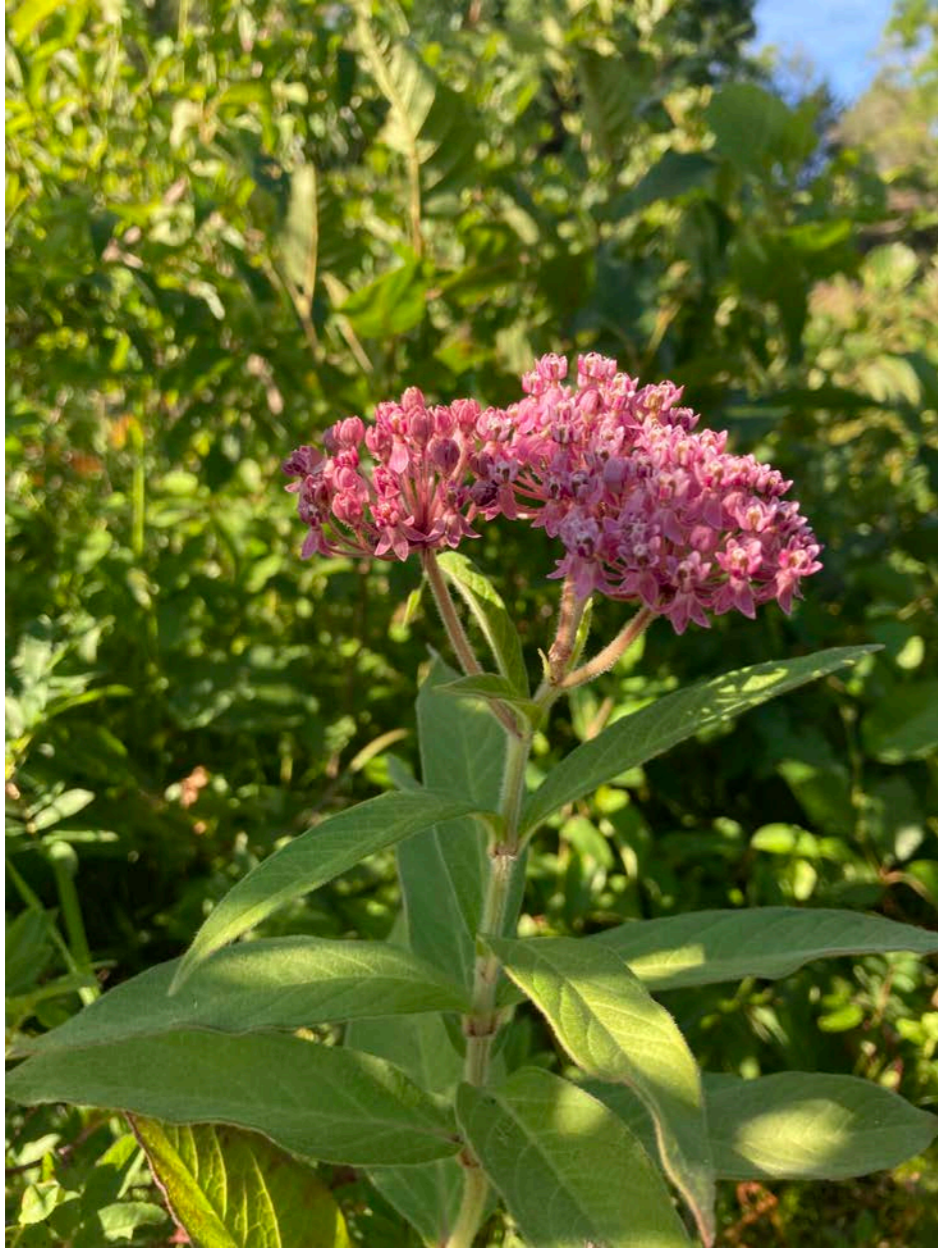
Symphotrichum cordifolium (blue wood aster)

Symphotrichum undulatum (wavy-leaved aster)

Verbena hastata var. *hastata* (blue vervain)

Vernonia noveboracensis (New York ironweed)

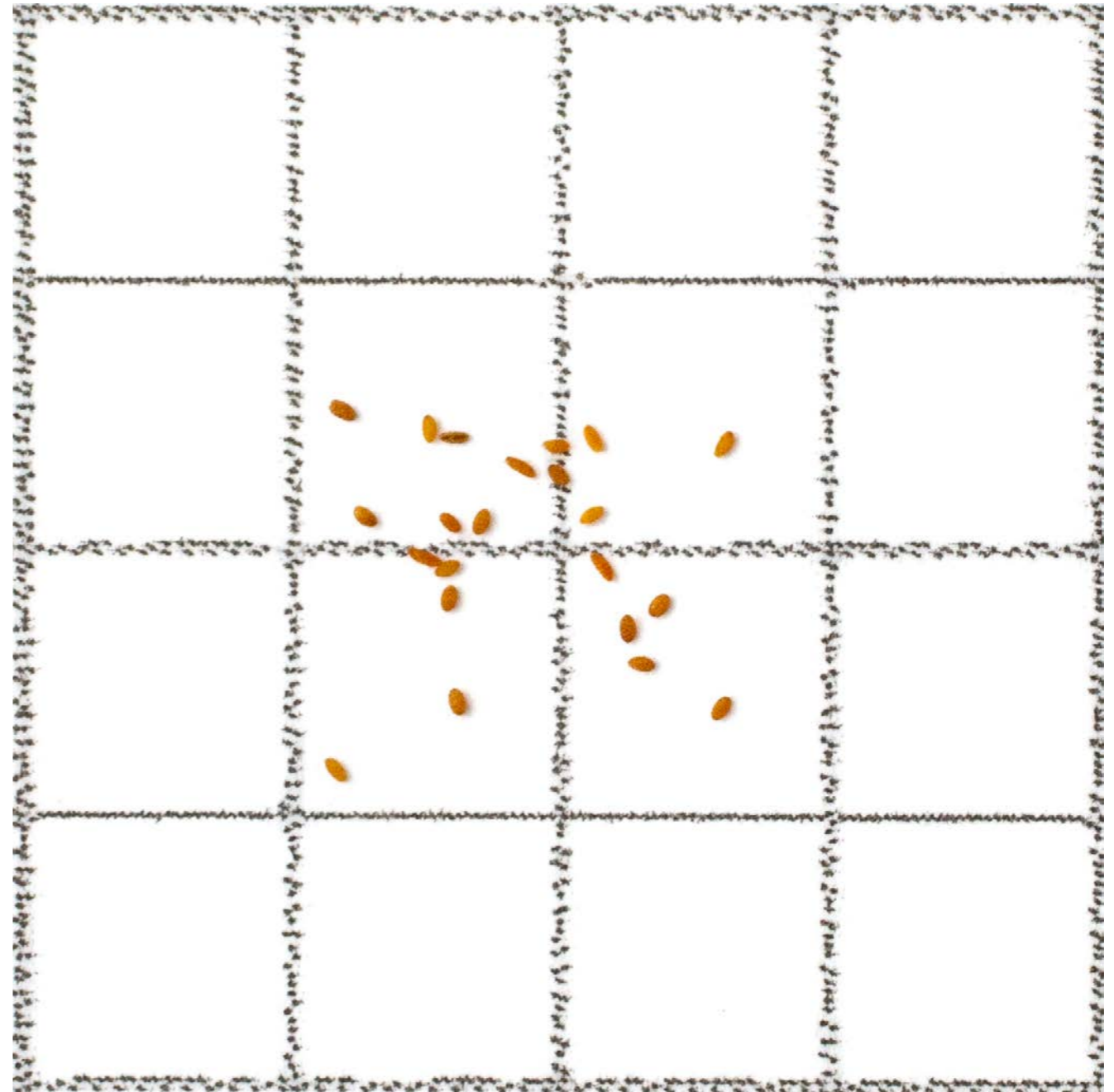




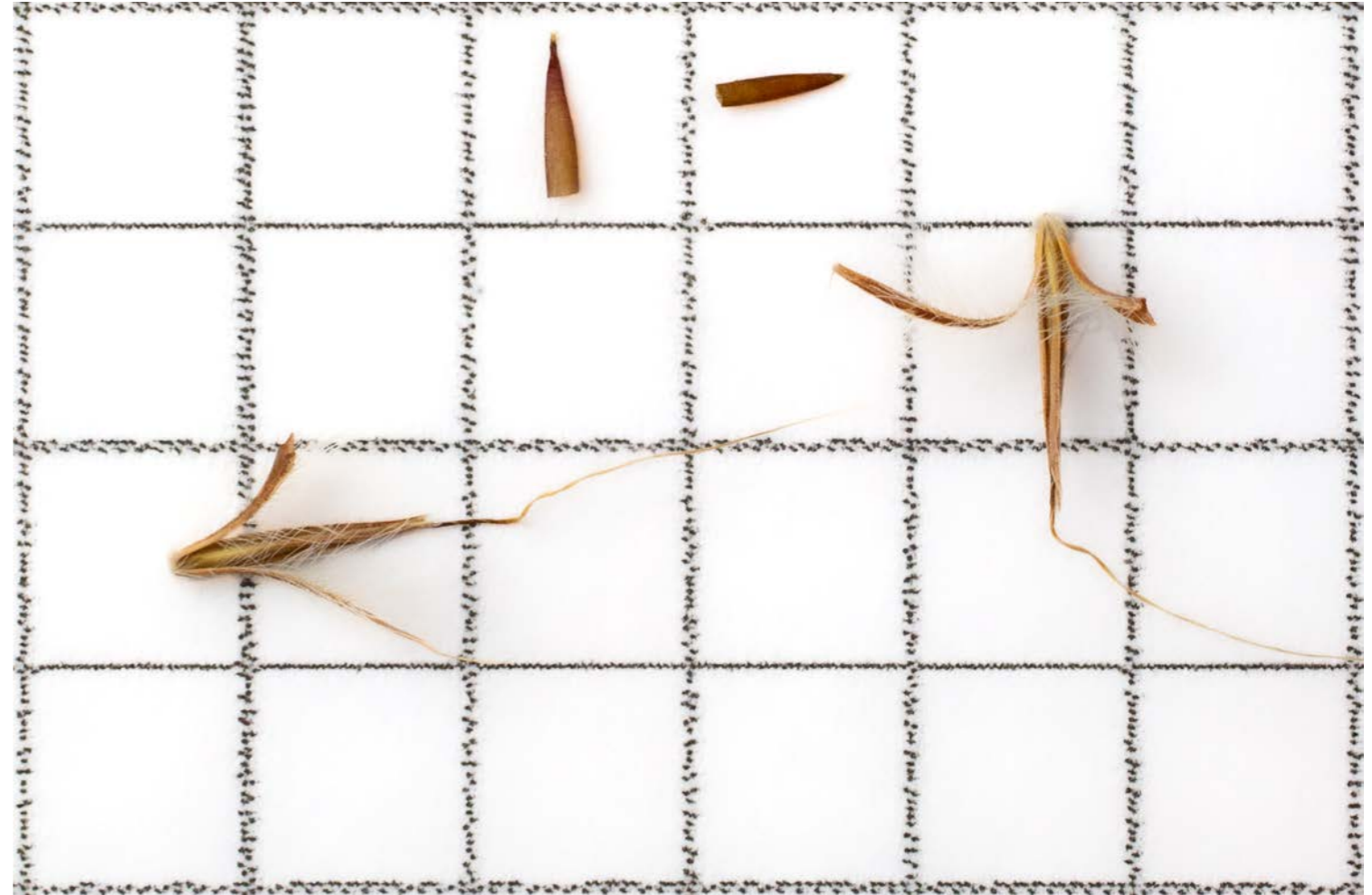
Asclepias incarnata (swamp milkweed)



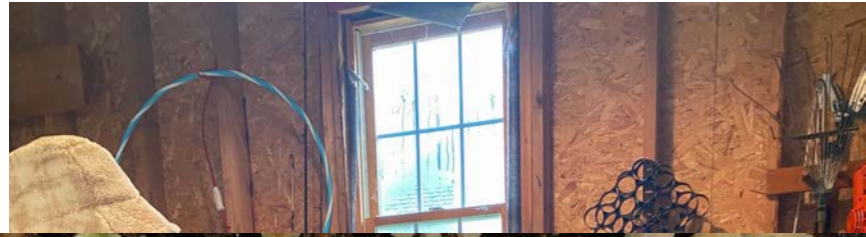
Vernonia noveboracensis (New York ironweed)



Lobelia spicata var. *spicata* (pale-spiked lobelia)



Schizachyrium scoparium
(little bluestem)



Achillea millefolium ssp. lanulosa
Common yarrow 2022 RS-5



Symphotrichum undulatum
Wavy-leaved aster 2022 RS-33



Solidago nemoralis ssp. nemoralis
Gray goldenrod 2022 RS-41

Partnering Farms

1. Brandon Family Farm

2. Revive the Roots

**3. Narragansett Tribal
Farm**

4. Mooresfield Organics

5. Puddingstone Acres

6. Aquidneck Land Trust

7. Barrington Farm School

8. Little Seed Farm



Brandon Family Farm


New 10-Acre Organic

Farm Site

West Kingston, RI

**Brenda
Woodward
URI MG**

**Albert Brandon
Organic Farmer**



Revive the Roots
Organic Farm
Smithfield, RI

Annie
Organic Farmer

Crandall Farm

Narragansett

Tribal Farm

Westerly, RI



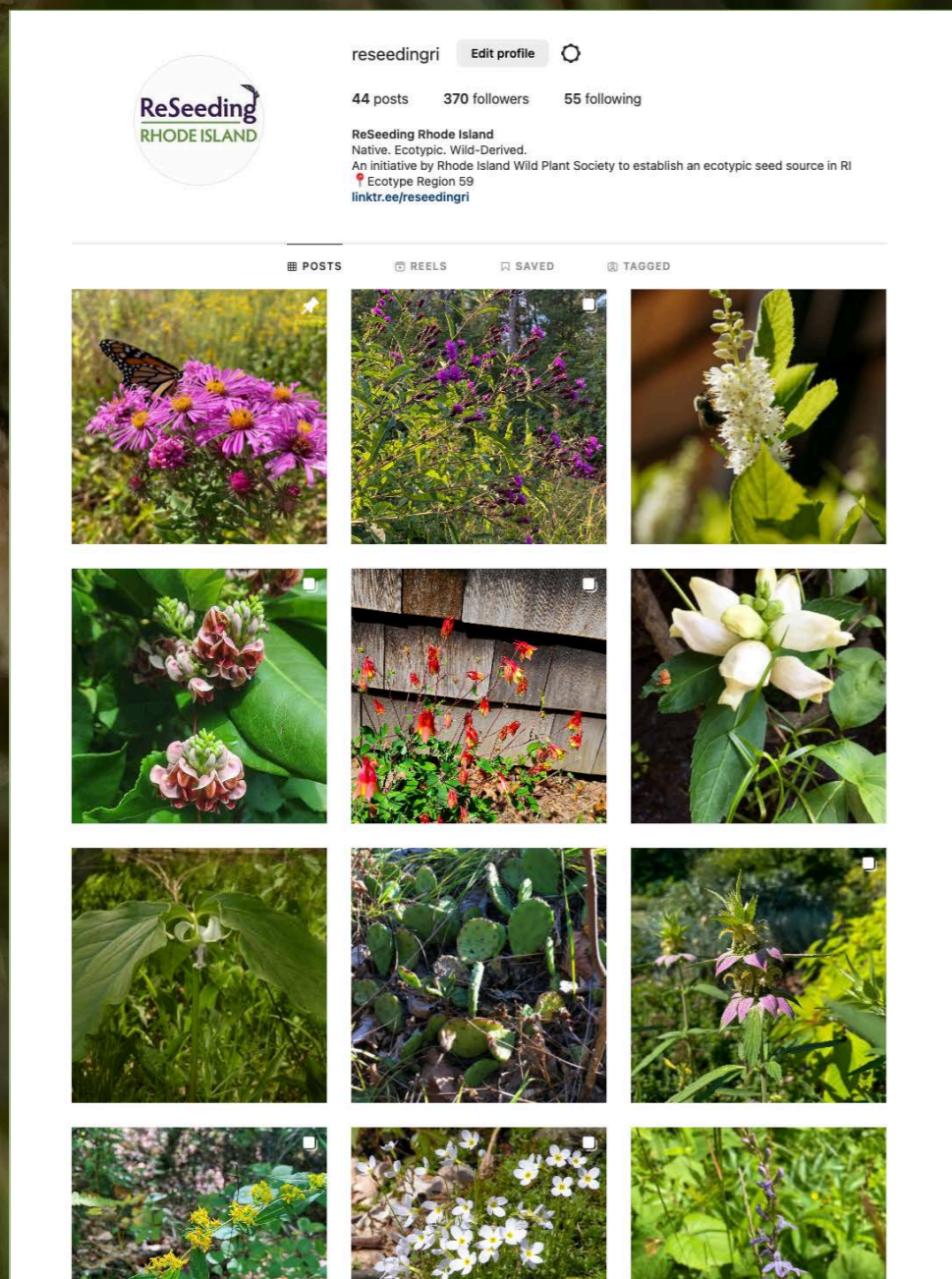
**Steve Smith
Farmer**

A man, Jerry Bove, stands in a field with trees in the background. He is wearing a grey sweater with a white patterned band across the chest and blue pants. The field is covered in grass and some fallen leaves. In the background, there are many bare trees and a small wooden structure or shed.

Moorefield Organics
South Kingstown, RI
Organic Farmer

Jerry Bove
Organic Farmer

@reseedingri



Ways to Support ReSeeding

Rhode Island:

Join RIWPS today!

Tell your friends about us!

Volunteer with RIWPS!

Follow us on Instagram!



2023 PLANT SALES

EARLY NATIVE PLANT SALE | May 13 | Saunderstown
Featuring – Spring ephemerals and early blooms.

THE BEST NATIVE PLANT SALE IN RHODE ISLAND | June 3 | Kingston
Featuring a wide variety of wildflowers plus ferns shrubs, trees and vines for all growing conditions.

FALL NATIVE PLANT SALE | August 26 | Cranston

Proceeds support the work of Rhode Island Wild Plant Society

Please also know that we are not able to offer plants for sale beyond our specific sale-day events.



Dave Vissoe
(RIWPS VP)
dvissoe@gmail.com



Shannon Kingsley
(Seed Collector)
seed.collection@riwps.org